

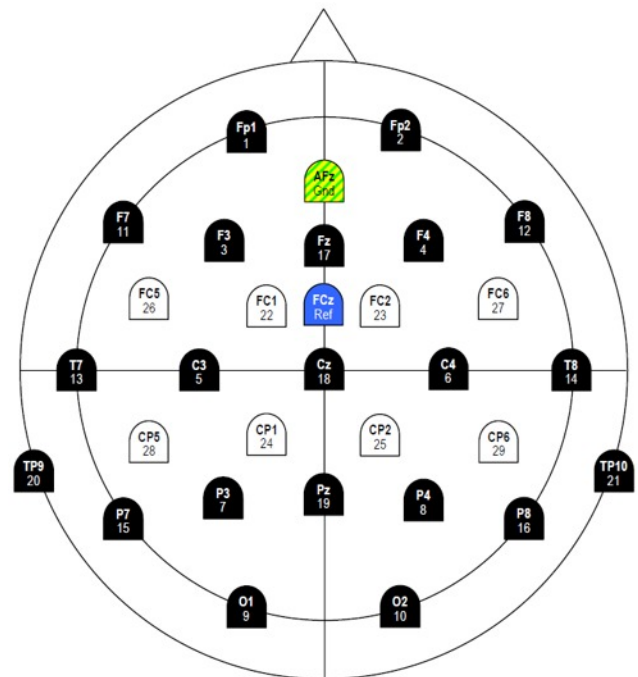
ACTIVE CAPS



■ Easycap Active 32 ch

Active Set Includes:

- 32 AE-B12-F-150 Active Fast n Easy Electrode for Cable Tree with 150 cm cable length, number label at sensor, 4-pin pole connector
- 1 AE-B12-FR-150 Active Fast n Easy Reference Electrode for Cable Tree with 150 cm cable length, number label at sensor, 4-pin pole connector
- 1 AE-B12-FG-150 Active Fast n Easy Ground Electrode for Cable Tree with 150 cm light-duty leadwire, "Gnd" label at sensor, 1-pin solder connector
- 1 CUC-58 Subtemporal Cap for head circumference 58 cm medium elasticity, caucasian cut equipped with 31 electrode adaptors A07 stated below, mounted according to Montage No. 22
- 31 A07 Electrode adaptor for FE-Electrodes
- 1 AEP32 Power Supply Box for 32 Active Electrodes Version for Cable-Tree, incl. One 30cm-flat-ribbon cables
- 1 E105 Universal Amplifier Adapter touch-proof (32 + Ref+ GND)
- Chest belt with chin straps(1) and Chin belt (1)
- Startset incl. gel and accessories



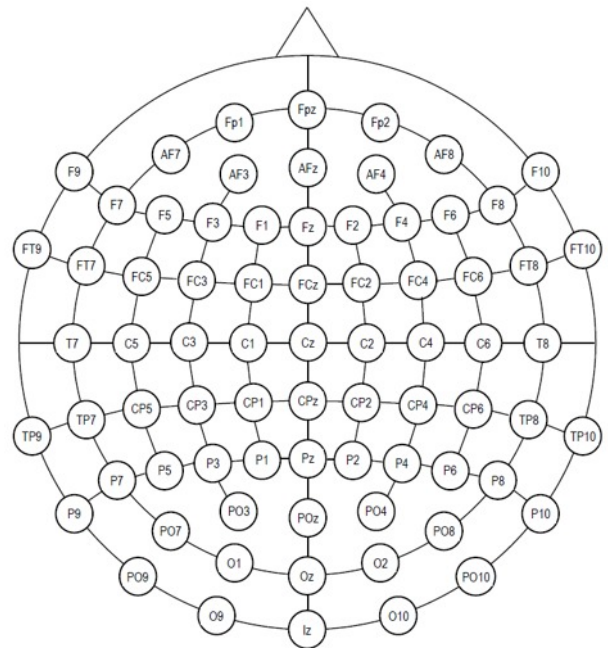
Montage Nr. 22: 19 Positions of Int. 10/20-System plus Mastoids, 8 equidistant extension positions from 10%-System. FCz may serve as Recording Reference, AFz as Gnd.

Note: The Channel Numbers are assigned arbitrary and can be re-arranged.

■ Easycap Active 64 ch

Active Set Includes:

- 64 AE-B12-F-150 Active Fast n Easy Electrode for Cable Tree with 150 cm cable length, number label at sensor, 4-pin pole connector
- 1 AE-B12-FR-150 Active Fast n Easy Reference Electrode for Cable Tree with 150 cm cable length, number label at sensor, 4-pin pole connector
- 1 AE-B12-FG-150 Active Fast n Easy Ground Electrode for Cable Tree with 150 cm light-duty leadwire, "Gnd" label at sensor, 1-pin solder connector
- 1 CUC-58 Subtemporal Cap for head circumference 58 cm medium elasticity, caucasian cut equipped with 31 electrode adaptors A07 stated below, mounted according to Montage No. 1
- 74 A07 Electrode adaptor for FE-Electrodes
- 1 AEP32 Power Supply Box for 64 Active Electrodes Version for Cable-Tree, incl. two 29cm-flat-ribbon cables, NiMH-rechargeable Battery 9V and Battery Recharger
- 2 E105* Universal Amplifier Adapter touch-proof (32 + Ref+ GND)
- Chest belt with chin straps(1) and Chin belt (1)
- Startset incl. gel and accessories



Montage No. 1

Official 10%-System according to J.Clin.Neurophysiology
Vol.8, No. 2, 1991: American Electroencephalographic Society
Guidelines for Standard Electrode Position Nomenclature

* Please specify us if you need a custom-made amplifier-specific adaptor,

For example:

- E105-SA2 Adaptor to SynAmps2/RT 64 channels from Power Supply Box to SynAmps2/RT "To Cap"- Input