



# Scan LT

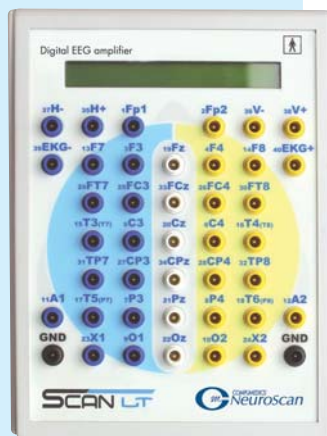
Digital clinical EEG workstation

**Power and Quality with Value**

Now Powered with the World Class  
Acquisition, Review and Analysis Software



Can an entry level clinical EEG solution be both powerful and affordable straight out of the box? At Compumedics we prove that it can be with our Scan LT. With the ease of use and simple setup of our cost-effective solution, you will be ready to start your EEG study in a matter of minutes. And of course Compumedics has not compromised on performance. A desirable suite of powerful features make this system ideal for even the most sophisticated user.



Amplifier



Photic Strobe

### Compact and powerful

The Scan LT is a complete 40-channel EEG system that weighs less than 4.5kg (10lbs) including a typical laptop computer! Scan LT offers highly advanced EEG acquisition and review tools in a compact and lightweight package. Bundle the Scan LT system with a notebook computer and you have the ultimate in portability - a complete 40-channel system to go!

### Performance enhancing technologies

SCAN LT incorporates 40-channel digital EEG acquisition and photic stimulation in two lightweight peripherals that connect to a PC via a Universal Serial Bus (USB) cable. USB makes setup simple, and a single power cord is all that is needed for the whole system. Everything can be packed up for travel in seconds.

### Setup and Recording Simplified

Routine clinical EEG procedures are simplified with the advanced features from Profusion EEG4. Built-in electrode impedance measurement help you ensure the best quality signals.

### System Configurations

SCAN LT is available both in a portable configuration with a notebook computer and in a laboratory-based configuration.

## Hardware Technical Specifications

### Digital EEG Acquisition

- **Number of channels** - 40 unipolar (39 bipolar channels can be computed)
- **Digitization rates (after anti-aliasing)** - 125, 250, 500, 1000 Hz per channel
- **Bandwidth (3dB down)** - DC to 262 Hz
- **Signal dynamic range** -  $\pm 130$  mV (22 bits ADC)
- **Input impedance** - Not less than 90 M $\Omega$
- **Computer interface** - Universal Serial Bus (USB), full support for Plug And Play technology
- **Synchronization with external devices**  
2 input TTL lines  
2 output TTL lines

- **Electrode impedance, quality control of electrode application** - Before application, measurement of contact impedance (at frequency 30 Hz). During recording, constant monitoring of contact quality
- **Electrode connectors** - Touchproof (DIN 42-802) recessed male pins for individual channels  
Plastic DSUB37F for use with Quik-Cap™
- **Power supply and energy consumption**  
From USB (5V), in active mode current up to 0.4A, in standby mode current up to 5 mA

- **Electric safety** - According to EN60601-1 (type BF), IEC601-1
- **CMRR >100db**

### Photic Stimulator

The photo stimulator contains a matrix of super light diodes (white), guaranteeing long life and minimal electrical interference. Frequency of stimulation 0.5-50 Hz. USB connection to PC.

### Computer Specifications

The system can be supplied with a notebook or desktop computer with the latest features.



### Highlight features:

#### Next Generation Montaging System

- Next generation montage editor allows easy manipulation of any aspect of a montage on the fly
- Complex montages with weighted averaging can be created
- Montage changes are applied in real time so that any change is immediately apparent in concurrently opened polygraphs
- Electrode mapping allows dynamic assignment of patient electrodes to amplifier channels

#### Unprecedented Video Quality

- Top end video resolution for unprecedented video clarity and superior digital zoom capabilities: full D1 resolution 720x576 at 30/25 frames per second
- Video is frame-locked to EEG data so waveforms and video are always precisely synchronised
- Open multiple video windows simultaneously with different zoom and pan in each window

### Easy Event Annotations

- Single-keystroke or single-mouse-click operation for easy insertion of annotations and other events
- Comprehensive event navigation including custom search function e.g. find "head/eyes to the right" events
- Define your own event categories to group similar events
- Define your own most used annotations and insert any one with a single keypress

### Live Editing System

- Edit studies with full suite of operations whilst recording is in progress
- Summary and Trace views synchronise your selections allowing easy relation of the overall view to detailed EEG data
- Define multiple selections of EEG and edit them simultaneously

### Intelligent Reporting

- Intelligent reporting engine allows instant in-place customisation of report templates
- Easily make your own templates inside the application, with Microsoft Word, or your favourite text editor
- Drag'n'drop EEG traces directly into reports
- Export reports to PDF or Microsoft Word formats
- Unlimited user-defined report fields

## For more information please contact:

**Compumedics Limited, Australia: Headquarters**  
30-40 Flockhart Street  
Abbotsford VIC 3067, Australia  
Ph: +61 3 8420 7300  
Fax: +61 3 8420 7399  
Free Call: 1800 651 751

**Compumedics USA, Limited:**  
6605 West WT Harris Blvd, Suite F  
Charlotte, NC 28269  
Toll Free: +1 877 717 3975  
Ph: +1 704 749 3200  
Fax: +1 704 749 3299

**Compumedics Germany GmbH:**  
Global HQ for Compumedics DWL  
Josef-Schüttler-Strasse 2  
D-78224 Singen, Germany  
Ph: +49 7731 79 76 9-0  
Fax: +49 7731 79 76 9-99

### Your local Compumedics Distributor:

[www.compumedics.com](http://www.compumedics.com)

All specifications are subject to change without notice. Please contact your Compumedics representative for the latest technical information, pricing and product availability. SCAN LT and Quik-Cap are trademarks of Compumedics, Ltd. Windows 2000, Office Access, Word, Excel and Pentium III are registered trademarks of their respective owners.

AB867 Issue 2

